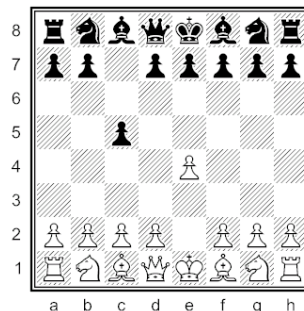


# Topeka Collegiate Chess Tournament



February 4th, 2012

Topeka Collegiate School  
2200 SW Eveningside Dr  
Topeka, Kansas



Divisions: K-3, K-5, K-8, K-12, and adult USCF

Registration: 8:00-9:05am Saturday February 4th. First round begins at 9:30am. Late entries will not be paired in the first round.

Pre-registration: Please register by 5pm on **Thursday February 2nd** via KSCA registration at <http://ksca.us/kscadb/register.php?id=31> or by e-mail Brian Yang at [yang.brian@ymail.com](mailto:yang.brian@ymail.com) Please include School Name, Student Name, Grade, and preferred section.

Entrance Fee: \$7 for those who pre-registered; \$10 otherwise.

Rounds: 6 Round Swiss tournament; Game 30 with 5 second delay.

K-3 Section players are not required to take notation; all other sections will be expected to take notation to their best abilities.

Please bring boards and clocks if you have them. Thank you.

Prizes: Medals for all players. Trophies for top three teams in each division.

Concessions will be available on-site.

**USCF Adult Section:** 4 rounds of G/30 with 5 second delay (dual-rated: affects both regular and quick ratings). Runs concurrent with scholastic rounds' 2-5. Both USCF and KCA memberships are required. OSA. May purchase memberships on-site. Pre-register by **Thursday February 2nd** 2012 by e-mail to [yang.brian@ymail.com](mailto:yang.brian@ymail.com) . Pre-registered fee \$7.00 entry fee.\$10.00 on-site. Cash-only.

For more information, please e-mail David McCoy at [dmccoy@topekacollegiate.org](mailto:dmccoy@topekacollegiate.org) or tournament-related questions, e-mail Brian Yang at [yang.brian@ymail.com](mailto:yang.brian@ymail.com)

Directions are Below:

## Directions:

From Southwest (Wichita, Emporia): Take the I-335 turnpike to Topeka. Go through the tollbooth. Continue on I-470 to the Gage exit. The Gage exit will be on the right. At the light, turn right (north) onto Gage. Continue north through the light at 29th and Gage. After the intersection, you will pass over a bridge. A park will be on your right and a residential area will be on your left. At the light at 21st and Gage, turn left (west). At 21st and Gage there are the grounds of the veterans hospital on the right, a Spangles restaurant across the intersection to the left, and the Jade Garden restaurant across the intersection to the right. Continue west on 21st street to the first (and only) light at Eveningside. Turn left (south) onto Eveningside. It is impossible to turn north on Eveningside. Continue on Eveningside for about a block and the school will be on your left (east). The entrance is on the west side of the building towards the north end.

From West (Salina, Manhattan): On I-70, as you reach Topeka, there will be an exit for I-470. Take this exit. It will curve off to the right. Next, take the exit for 21st street. You'll drive up to a light. Turn left (east) at the light. You will be on a four lane road (two lanes each direction). You will go through a couple of traffic lights in a business district. Continue through the light at the intersection of 21st and Fairlawn. At 21st and Fairlawn, there will be a gas station on the right, a liquor store on the left, a bank across the intersection to the right, and a tire service center across the intersection on the left. After going straight through the intersection at 21st and Fairlawn, you will begin to enter a residential area. Continue until you reach the next light at Eveningside. Eveningside is the only street with a traffic light. At Eveningside, turn right (south). It is impossible to turn left at Eveningside. Continue on Eveningside for about a block and the school will be on your left (east). The entrance is on the west side of the building towards the north end.

From East (Lawrence, Kansas City): On I-70, there is a service center before you reach Topeka. A few miles after that (when you're about halfway between Topeka and Lawrence) you will have the option of transferring to I-470 to South Topeka and Wichita. Take this exit on the left. Continue to the Topeka exit. You will pass through a tollbooth. Continue on I-470 to the Gage exit. The Gage exit will be on the right. At the light, turn right (north) onto Gage. Continue north through the light at 29th and Gage. You will pass over a bridge. A park will be on your right and a residential area will be on your left. At the light at 21st and Gage, turn left (west). At 21st and Gage, there are the grounds of the veterans hospital on the right, a Spangles restaurant across the intersection to the left, and the Jade Garden restaurant across the intersection to the right. Continue west on 21st street to the first (and only) light at Eveningside. Turn left (south) onto Eveningside. It is impossible to turn north on Eveningside. Continue on Eveningside for about a block and the school will be on your left (east). The entrance is on the west side of the building towards the north end.

From North (Onaga): Take Highway 75 S to Topeka. As you approach Topeka, you will cross the Kansas river, and Highway 75 will split to the east and west. Two lanes will go left (east) and a one-lane exit will go off the right (west). Take the I-70 exit to the right (west). Merge onto I-70 and then take the I-470 exit on the right. After you exit, you will be turned almost all of the way around until you are headed southeast. Next, take the exit for 21st street. You'll drive up to a light. Turn left (east) at the light. You will be on a four-lane road (two lanes each direction). You

will go through a couple of traffic lights in a business district. Continue through the light at the intersection of 21st and Fairlawn. At 21st and Fairlawn, there will be a gas station on the right, a liquor store on the left, a bank across the intersection to the right, and a tire service center across the intersection on the left. After going straight through the intersection at 21st and Fairlawn, you will begin to enter a residential area. Continue until you reach the next light at Eveningside. Eveningside is the only street with a traffic light. At Eveningside, turn right (south). It is impossible to turn left at Eveningside. Continue on Eveningside for about a block and the school will be on your left (east). The entrance is on the west side of the building towards the north end.

From South (Carbondale, Overbrook, Cherryvale): Connect with the Highway 75 N bypass. Go past 57th street (where the Target distribution center is) until you can exit to the left to I-470 headed west. Merge onto I-470. Continue on I-470 to the Gage exit. The Gage exit will be on the right. At the light, turn right (north) onto Gage. Continue north through the light at 29th and Gage. The traffic light at that intersection is mounted on a pole that hangs diagonally across the intersection. You will pass over a bridge. A park will be on your right and a residential area will be on your left. At the light at 21st and Gage, turn left (west). At 21st and Gage, there are the grounds of the veterans hospital on the right, a Spangles restaurant across the intersection to the left, and the Jade Garden restaurant across the intersection to the right. Continue west on 21st street to the first (and only) light at Eveningside. Turn left (south) onto Eveningside. It is impossible to turn north on Eveningside. Continue on Eveningside for about a block and the school will be on your left (east). The entrance is on the west side of the building towards the north end.